



What should I already know?

- About past and present events in their own lives and in the lives of family members.
- They know about similarities and differences between themselves and others, and among families, communities and traditions.
- Events happened before they were born.

What will I know by the end of the unit?

- The fire started on Sunday 2nd September 1666 in Thomas Farriner's bakery on Pudding Lane.
- The fires used for baking were not put out
- In 1666, the buildings in London were made of wood and straw and they were very close together, making it easy for the flames to spread.
- It had also been a dry summer, so the buildings were dry. Strong winds were blowing, which helped the flames to spread.
- People used leather buckets and water squirts to try to put the fire out, but these did not work. Later in the week, King Charles II ordered buildings to be pulled down to stop the flames from spreading.
- By Thursday 6th September, the wind had died down. This meant that people were able to put out the flames.
- Samuel Pepys wrote a diary all about the events.

Vocabulary

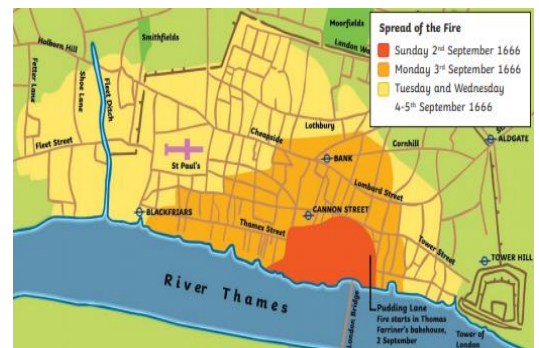
|                     |  |
|---------------------|--|
| Bakery              | A place that makes bread, cakes, etc.  |
| St Paul's Cathedral | A very large church in London. A new St Paul's Cathedral was built after the fire. |
| Diary               | A book that people write about their lives in.                                     |
| Firebreak           | A gap that stops a fire spreading to nearby buildings.                             |
| Timeline            | The order in which events happened (Chronological)                                 |
| London              | Capital City of UK   |
| Fire brigade        | Group of people whose job it is to put out fires                                   |
| Fire                | Flames - can be set intentionally or accidentally                                  |
| Mayor               | Important leader in a town/city  |
| Flammable           | Something that burns easily  |

Key Dates

1666 The Great Fire of London started in Pudding Lane

Historical Skills

- To sequence events.
- To describe memories of key events in lives.
- Use of time lines discuss the effectiveness of sources.
- To use a source - why, what, who, how, where to ask questions and find answers.





| Question 1<br>When was the Great Fire of London? | Start of unit: | End of unit: |
|--|----------------|--------------|
| 10 years ago                                     |                |              |
| 100 years ago                                    |                |              |
| Over 300 years ago                               |                |              |

| Question 3<br>Where did the fire start? | Start of unit: | End of unit: |
|---|----------------|--------------|
| St Pauls Cathedral                      |                |              |
| The River Thames                        |                |              |
| Pudding Lane                            |                |              |

| Question 2<br>How did the Great Fire of London begin? | Start of unit: | End of unit: |
|---|----------------|--------------|
| A fire used for baking was not put out properly       |                |              |
| From a bonfire  |                |              |
| Someone set a house on fire                           |                |              |

| Question 4<br>Write one fact about the Great Fire of London |
|---|
| Start of unit   |
| _____   |
| _____   |
| End of unit   |
| _____   |
| _____   |